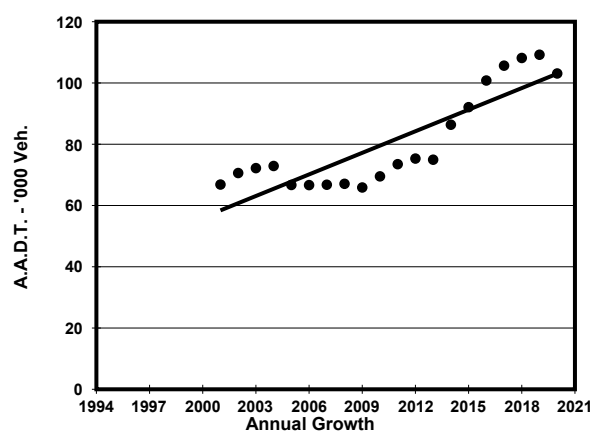
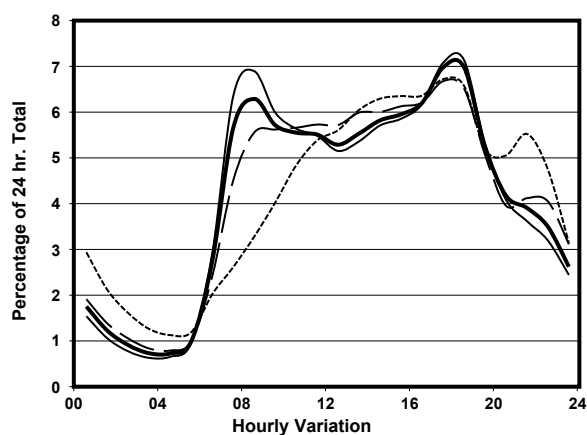
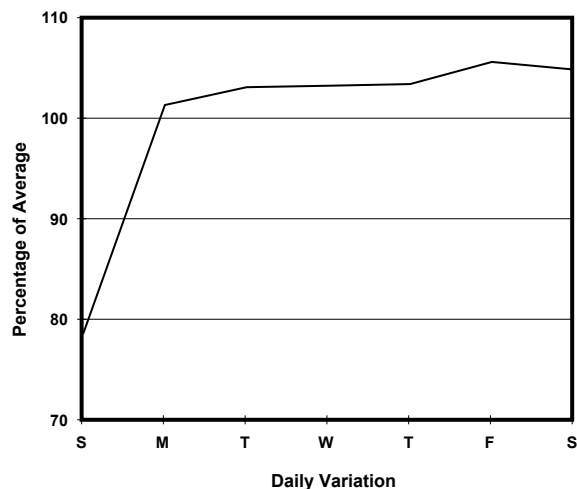
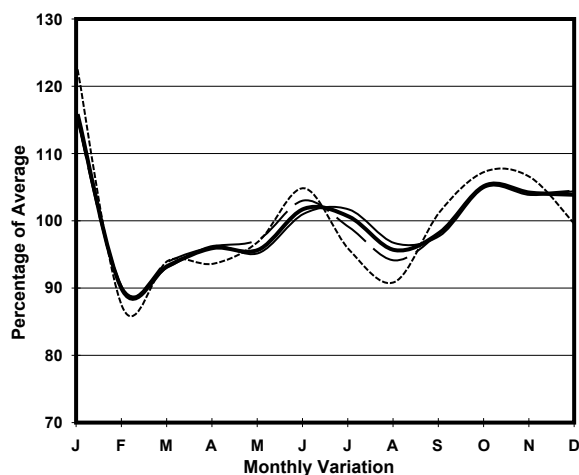


YEAR 2020
CORE STATION 5025
ROAD NETWORK MAJOR
ROAD TYPE EXPRESSWAY

LINK YUEN LONG HIGHWAY (from TIN SHUI WAI WEST INT to LAM TEI INT)

1.5m 11m 2.5m 14.6m 1.5m
E bound 3 lanes W bound 4 lanes

1. TRAFFIC FLOW VARIATION AND GROWTH



— All day — Mon.- Fri. Sat. - - - - - Sun.

2. TRAFFIC CHARACTERISTICS (BY DIRECTION)

Parameter	All - Day	Mon. - Fri.	Sat.	Sun.
EAST BOUND				
A.A.D.T.	52220	54570	54740	42010
R 12 / 24 - %	70.4	71.8	69.5	62.3
R 16 / 24 - %	88.9	89.8	87.9	84.7
AM Peak Hour	0800-0900	0800-0900	0900-1000	0900-1000
One-way flow at AM peak hour	3220	3720	2990	1580
T - % (AM)	-	18	-	-
PM Peak Hour	1700-1800	1700-1800	1700-1800	1700-1800
One-way flow at PM peak hour	3800	4040	3800	2900
T - % (PM)	-	19.9	-	-
Prop.of commercial vehicles - 16 hr.	-	20.3	-	-
WEST BOUND				
A.A.D.T.	50880	53120	53980	40640
R 12 / 24 - %	72.6	73.9	71.2	66
R 16 / 24 - %	87.7	88.3	87.2	84.5
AM Peak Hour	0800-0900	0700-0800	0900-1000	0900-1000
One-way flow at AM peak hour	3260	3780	3120	1750
T - % (AM)	-	16.3	-	-
PM Peak Hour	1800-1900	1800-1900	1700-1800	1700-1800
One-way flow at PM peak hour	3420	3650	3460	2660
T - % (PM)	-	10.6	-	-
Prop.of commercial vehicles - 16 hr.	-	21.5	-	-

3. OTHER INFORMATION AND COMMENT

4. Vehicle classification and occupancy - Monday to Friday

Time		Class of vehicle									
		Motor Cycle	Private Car	Taxi	Private LB	PLB	Goods veh.		Non Fr. Bus	Fr. Bus	
							Light	M & H		SD	DD
0700-0800	Pro	3.1	49.9	8.9	0.9	1.4	17.0	15.0	2.8	0.1	0.9
	Ocp	1.0	1.3	2.1	5.9	17.3	1.3	1.1	7.6	1.0	7.9
0800-0900	Pro	2.2	48.5	8.0	0.7	1.6	20.0	16.6	1.7	0.0	0.6
	Ocp	1.0	1.2	2.1	3.9	15.6	1.4	1.1	3.9	0.0	9.7
0900-1000	Pro	1.3	39.0	6.4	0.9	0.8	27.4	22.0	0.8	0.1	1.3
	Ocp	1.0	1.3	2.0	2.5	14.8	1.3	1.1	4.8	1.0	2.6
1000-1100	Pro	1.3	31.7	8.4	0.8	0.8	29.1	26.1	0.8	0.0	1.1
	Ocp	1.2	1.3	1.8	2.5	14.5	1.3	1.1	6.1	0.0	3.8
1100-1200	Pro	1.0	35.0	6.8	0.8	0.5	26.7	27.1	1.1	0.1	0.9
	Ocp	1.0	1.3	1.8	1.5	17.0	1.3	1.1	2.9	1.0	3.6
1200-1300	Pro	1.6	40.0	7.1	1.2	0.6	21.7	25.8	1.2	0.0	0.9
	Ocp	1.1	1.3	1.9	2.9	16.5	1.3	1.1	2.6	0.0	4.8
1300-1400	Pro	1.1	37.8	9.8	0.7	0.7	22.6	25.6	1.0	0.0	0.7
	Ocp	1.1	1.3	2.0	5.6	16.8	1.4	1.1	4.1	0.0	7.5
1400-1500	Pro	1.1	35.6	7.5	0.7	0.7	23.4	29.0	1.2	0.1	0.6
	Ocp	1.0	1.4	2.1	1.9	12.0	1.3	1.1	6.7	1.3	5.7
1500-1600	Pro	1.6	35.1	8.3	0.5	0.6	27.1	25.3	0.8	0.0	0.8
	Ocp	1.0	1.4	1.8	1.4	13.1	1.4	1.1	2.3	0.0	5.3
1600-1700	Pro	1.8	38.5	7.2	0.5	0.6	25.0	24.2	1.0	0.1	1.2
	Ocp	1.0	1.4	1.8	3.0	19.1	1.4	1.1	1.5	1.5	4.7
1700-1800	Pro	2.9	44.7	5.5	0.6	1.1	24.5	18.2	1.4	0.0	1.1
	Ocp	1.1	1.4	1.7	2.3	19.5	1.4	1.1	6.8	0.0	5.9
1800-1900 Peak hour	Pro	4.4	61.9	6.4	0.5	1.3	16.0	7.5	1.4	0.1	0.7
	Ocp	1.1	1.4	2.1	1.4	19.5	1.4	1.1	9.9	4.0	14.5
1900-2000	Pro	2.5	63.8	5.9	0.1	1.3	16.5	6.9	1.9	0.0	0.9
	Ocp	1.1	1.3	1.9	1.5	19.5	1.4	1.0	4.0	0.0	6.9
2000-2100	Pro	3.3	60.4	9.7	0.0	0.7	16.4	6.9	1.1	0.0	1.4
	Ocp	1.1	1.3	1.9	0.0	17.3	1.3	1.1	1.6	0.0	3.0
2100-2200	Pro	2.8	62.2	11.0	0.3	0.7	11.3	9.4	1.0	0.0	1.2
	Ocp	1.2	1.5	1.9	1.3	19.0	1.3	1.0	1.5	0.0	3.2
2200-2300	Pro	2.1	64.8	9.0	0.1	0.8	13.9	8.1	0.7	0.0	0.4
	Ocp	1.1	1.4	1.8	2.0	16.5	1.4	1.1	12.0	0.0	4.4
16 hours	Pro	2.2	46.2	7.7	0.6	0.9	21.5	18.7	1.3	0.1	0.9
	Ocp	1.1	1.3	1.9	3.0	17.0	1.4	1.1	5.2	1.4	5.6

Legend: Pro. Proportion of vehicles in % (Sum may not add up to 100% due to figure rounding)*

Ocp. Average occupancy of vehicles including both driver and passengers*

M&H Medium and Heavy

* All traffic data are collected from combined bounds